

# Elite Fixed Wall Mount

The Elite fixed wall mount offers high security and durability in a sleek and stylish casing. Featuring a 4 point lock and a strong coated metal faceplate to protect your iPad or android tablet.

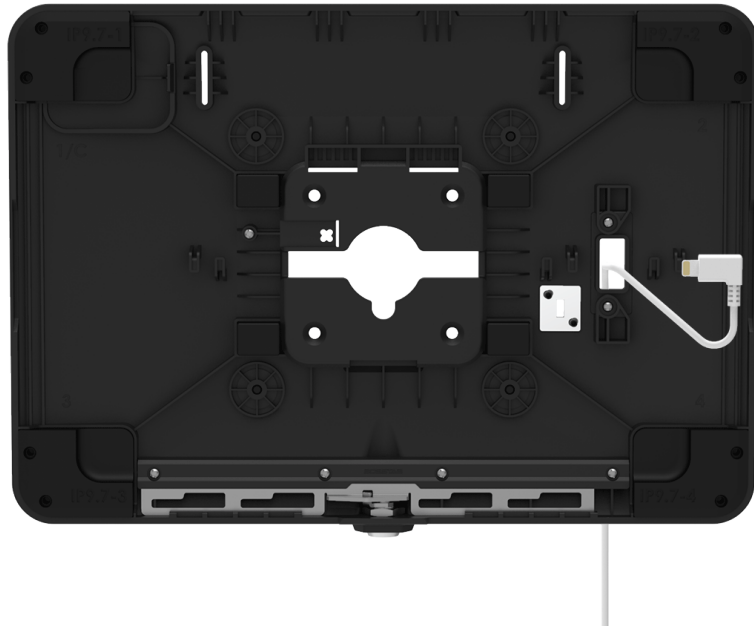




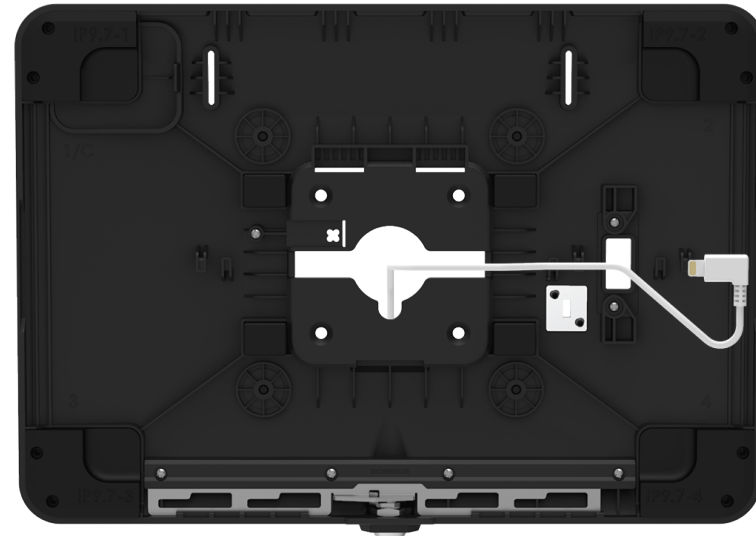
## Quick Release Latch

Now available with the Elite 2.0 iPad holder for selected tablets, the Elite Evo offers easy access through the Quick Release Latch, while the 4-Point Lock provides strong protection in high-traffic environments.

# Cable Management Options



Cable Cut Out



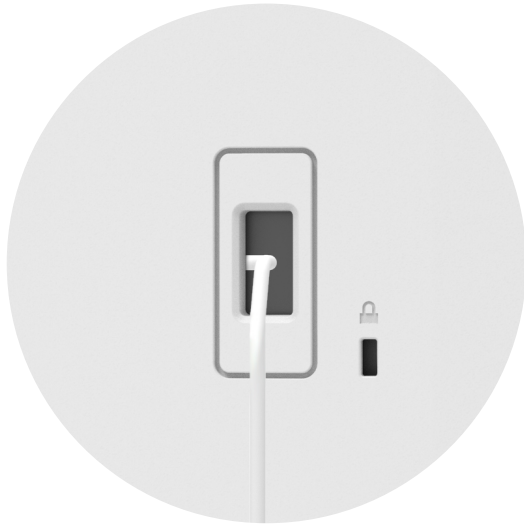
Mounting Surface



# Seamless Payment Integration

The Elite Card Reader Bracket easily attaches any payment device to your Bosstab Elite holder, ensuring a smooth and efficient self-service checkout experience.

# Case Accessories



**Cable Cut Out**



**Cable Lock Port**



**Camera Cut Out**



**Recommended  
height for the  
Elite Fixed Wall  
Mount**

51.2" - 59" (130 - 150 cm)

# Custom Branding Solutions

Add your logo on the Elite Fixed Evo Wall Mount with a silk-screen finish on our powder coated molded metal bases or on the front facing display.



# Supported Tablets



## iPad Pro

iPad Pro 13" (M5/M4)

iPad Pro 11" (M5/M4)

iPad Pro 12.9" 6th/5th/4th/3rd Gen

## iPad Air

iPad Air 13" (M3/M2)

iPad Air 11" (M3/M2)

## iPad

iPad 11" (A16)

iPad 10.9" 10th Gen

iPad 10.2" 9th/8th/7th Gen

## SAMSUNG

### Tab S

Galaxy Tab S10+/S9+/S8+/S7+ 12.4"

Galaxy Tab S11/S9/S8/S7 11"

Galaxy Tab S10 FE/Lite 10.9"

### Tab A

Galaxy Tab A11+/A9+ 11"

Galaxy Tab A8 10.5"/A7 10.4"

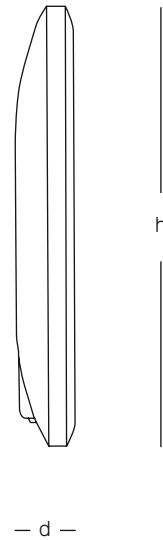
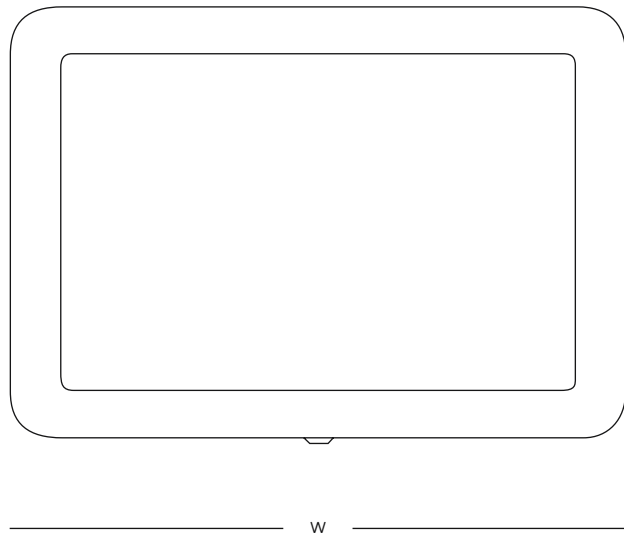


### Tab A

Surface Pro 11 (Copilot+) 13"

Surface Pro 10/9/8 13"

# Specifications



**Elite Holder**

**w** - 11.69" (297mm)

**h** - 8.27" (210mm)

**d** - 1.31" (33.5mm)

**Large Elite Holder**

**w** - 12.99" (330mm)

**h** - 10.24" (260mm)

**d** - 1.31" (33.5mm)